

Subject: Possible incorrect mounting of the tow release cable guiding fittings, resulting in malfunction.

Affected gliders: All ASW 19 and ASW 19 B, serial numbers 19001 thru 19405.

Compliance: Prior to the next take-off.

Reason: Following a case of unintended release of the tow hook during take-off (which possibly was caused by an incorrect mounting of the tow release cable guiding fittings), an inspection of the neutral travel at the actuating cable line of the tow release is required.

Background: With older ASW 19 and ASW 19 B the cable guiding fittings were mounted in front of the control bulkhead (as shown in Fig.1), while with newer gliders the fittings were mounted as standard rear of the control bulkhead (See Fig.2).

Now the following error may arise:

If the cable guiding fittings are mounted in front of the control bulkhead with sufficient neutral travel, the neutral travel disappears in case that the fittings are mounted by mistake rear of the control bulkhead.

Therefore, all ASW 19 and ASW 19 B must be changed as standard to the mounting of the cable guiding fittings to the rear of the control bulkhead, with sufficient neutral travel (Fig.2).

Action:

1. Check whether the cable guiding fittings are mounted in front of the bulkhead (Fig.1) or rear of it (Fig.2).
2. If the fittings are mounted in front of the bulkhead, they must be remounted to the rear !
3. Now you have to check whether sufficient neutral travel is left, as indicated in Fig.2. With too little neutral travel the plastic tube at the ball grip may be shortened accordingly and/or the neutral travel may be extended by turning in the turnbuckle (Fig.2).

Notes: The actions 1. thru 3. can be accomplished by an expert and must be documented in the logbook.

Poppenhausen, July 3, 1984

ALEXANDER SCHLEICHER
GmbH & Co.

Richard Waibel
(Richard Waibel)

The German original of this TN has been approved by the LBA under the date of July 10, 1984, and is signed by Mr. SCHMALJOHANN. The translation into English has been done by best knowledge and judgement; in any case of doubt the German original is authoritative.

84-15 50 618

Date of issue:
July 16, 19

Affected sailplane:

ASW 19

Serial number:

ASW 20B

Serial number:

ASW 20B

Serial number:

ASW 20B

Serial number:

ASW 20B

Serial number:

ASW 20B

Serial number:

ASW 20B

Serial number:

ASW 20B

Serial number:

ASW 20B

Serial number:

ASW 20B

Serial number:

ASW 20B

Serial number:

ASW 20B

Serial number:

ASW 20B

Serial number:

ASW 20B

Serial number:

ASW 20B

Serial number:

ASW 20B

Serial number:

ASW 20B

Serial number:

ASW 20B

Serial number:

ASW 20B

Serial number:

ASW 20B

Serial number:

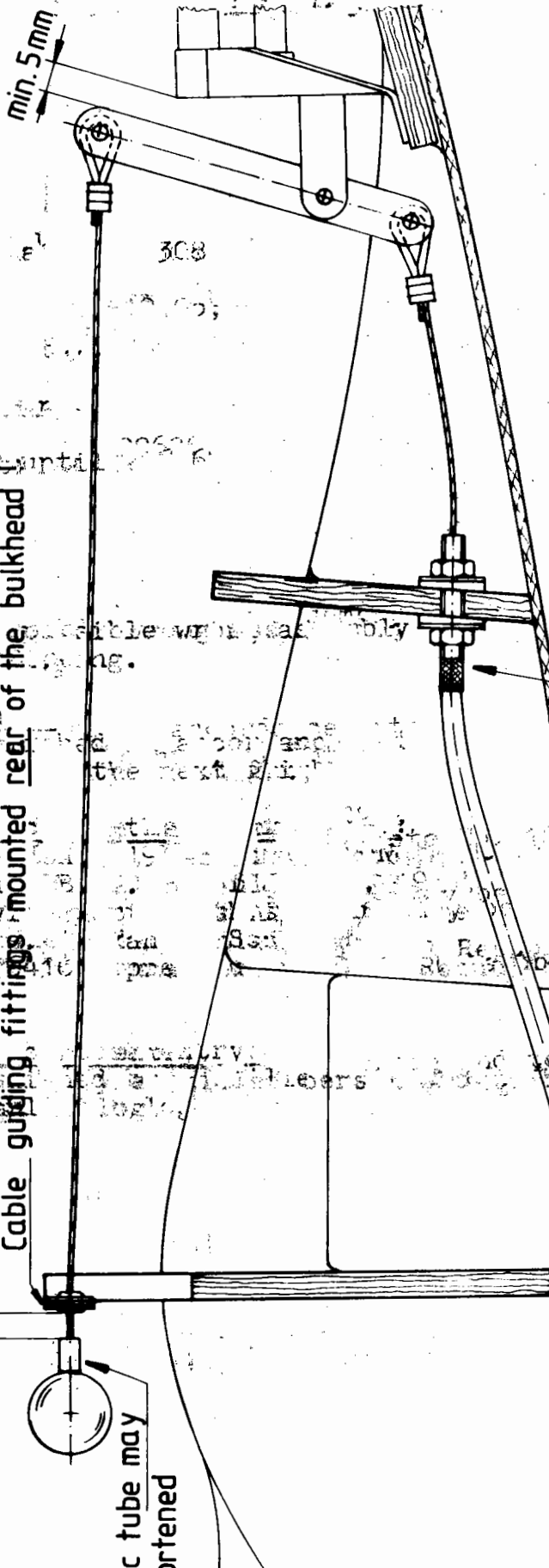
ASW 20B

Serial number:

ASW 20B

Serial number:

ASW 20B



Here the neutral travel can be extended by turning in the turnbuckle.

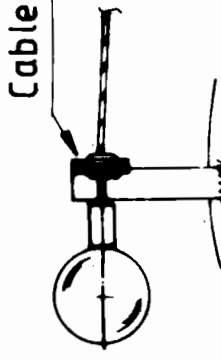


Fig. 1

Fig. 2

Plastic tube may be shortened