

Alexander Schleicher
- Segelflugzeugbau -
Poppenhausen/Wasserk.

Modification No. 3
Glider K 7
US 7G3

Sheet 1
Nb. of sheets 2

LTA Nr 15

Changing of the middle elevator bearing support.

The bearing support of an aircraft cracked along the weld due to excessive grinding of the ground plate.

Urgency: When cracks are found immediately, otherwise until 1.3.61.

Description of modification:

- 1.) Check the middle bearing support for cracks or grinded weld on the ground plate.
- 2.) Order a new bended support from the firm of Schleicher, Poppenhausen/Wasserkuppe, Germany
- 3.) Changing of the support see sheet Nb. 2

Approval of translation has been done by best knowledge and judgement - In any case the original text in German language is authoritative.

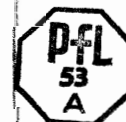
Drawings to be corrected:

Remarks:
Modification made from
S.No. 833 and before
S.No. 343

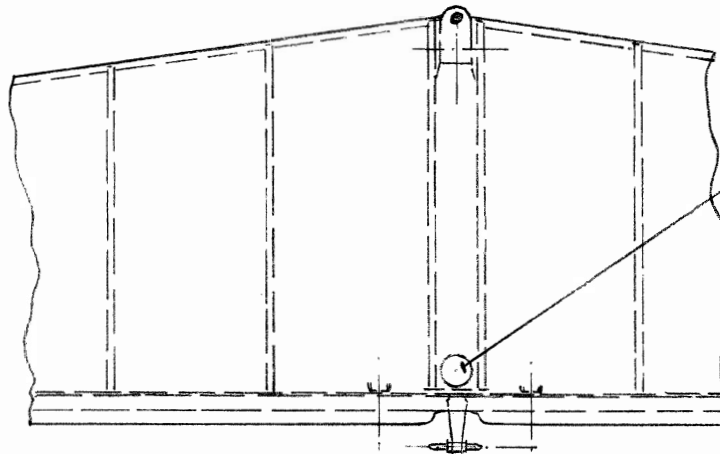
EfL-Prüfvermerk

Drawing L-211.38 - S 1
correct.

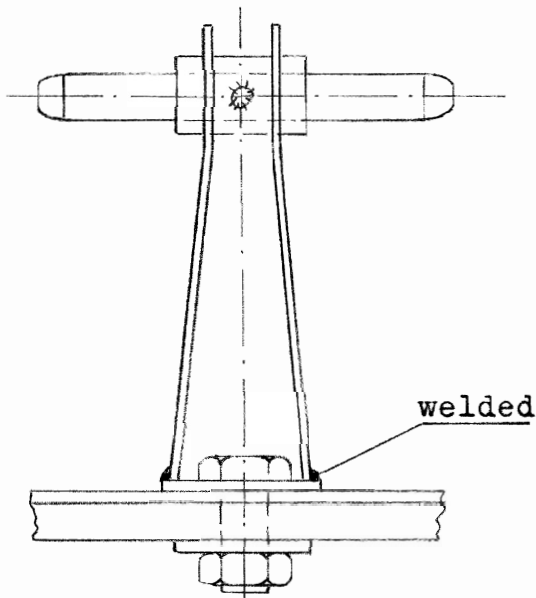
25.10.63 *Fr.*



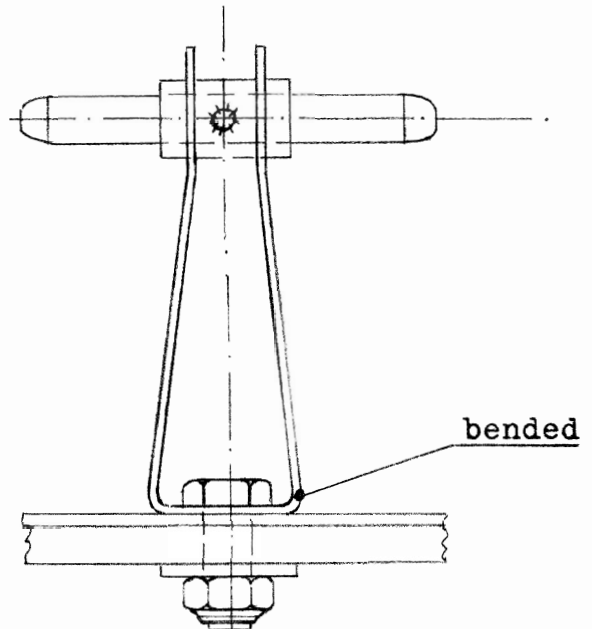
Reinhold
28. Nov. 1963



1. Cut in a hole into the plywood covering on the lower side.
4. Close later the hole with 0.04 " plywood.



2. Remove the old support.



3. Mount new support with new screws and nuts. Notice: No bearing thread, cut thread exactly.