

Alexander Schleicher
- Segelflugzeugbau -
Poppenhausen/Wasserk.

Modification No. 3
Glider K 8 a. K 8 B
(US 7G4)

Sheet 1
Nb. of sheets 2

Changing of the middle elevator bearing support.

LTA Nr. 17

The bearing support of an aircraft cracked along the weld due to excessive grinding of the ground plate.

Urgency: When cracks are found immediately, otherwise until 1.3.61.

Description of modification:

- 1.) Check the middle bearing support for cracks or grinded weld on the ground plate.
- 2.) Order a new bended support from the firm of Schleicher, Poppenhausen / Wasserkuppe, Germany.
- 3.) Changing of the support see sheet nb. 2

Approval of translation has been done by best knowledge and judgement. - In any case the original text in German language is authoritative.

Drawings to be corrected:

Remarks:
Modification made from S.No. 818 with exept. from S.No. 830, 843, 850.

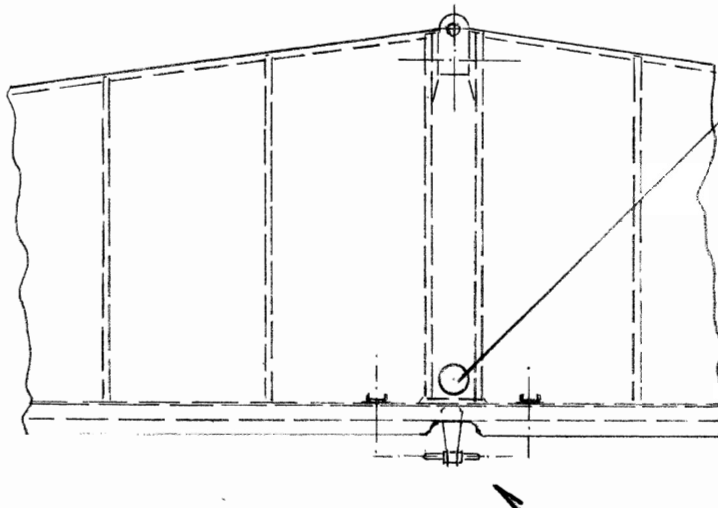
FfL-Prüfvermerk

Correct drawing
L-216. 36-S 1

29.10.63 *tr.*

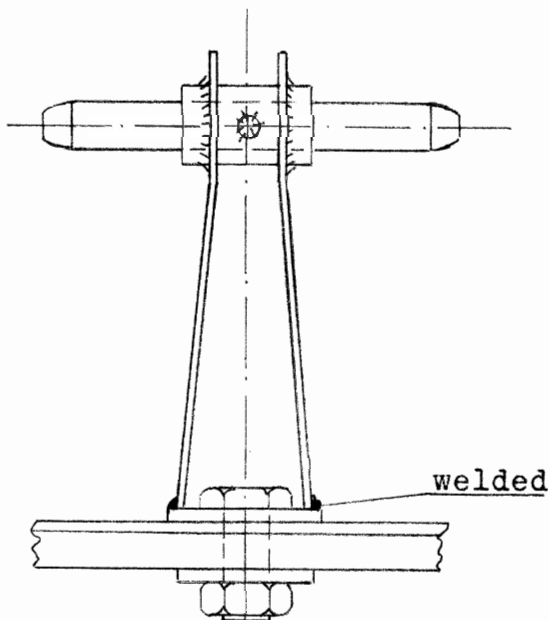


Reinhe
2 8. Nov. 1963

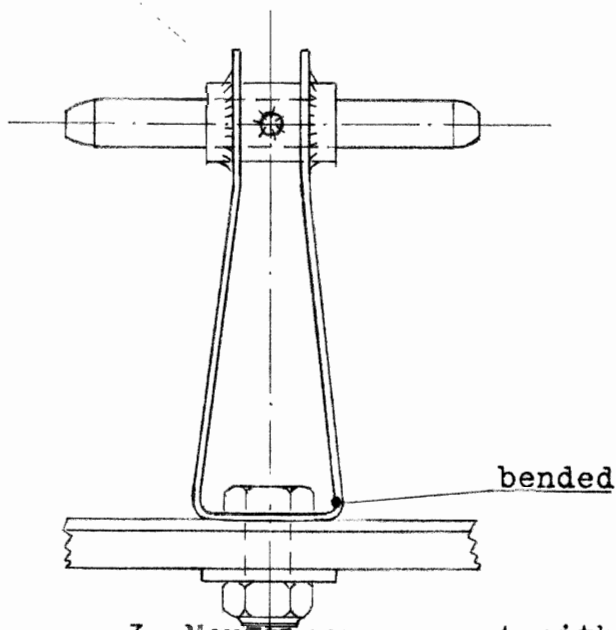


1. Cut in a hole into the plywood covering on the lower side.

4. Close later the hole with 0.04 " plywood.



2. Remove the old support.



3. Mount new support with new screws and nuts. Notice: No bearing thread, cut thread exactly.