

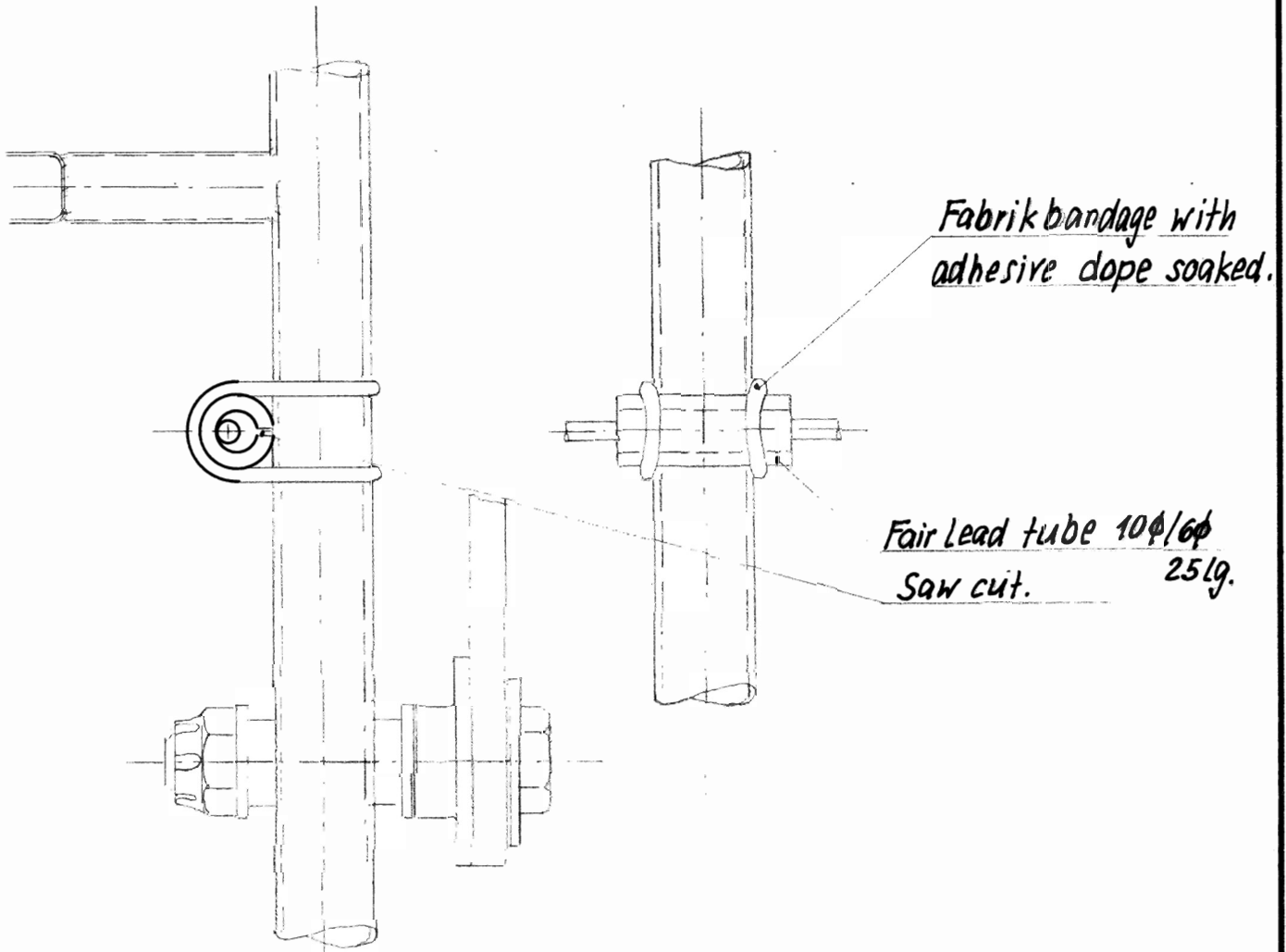
Reason: Installation of an additional fair lead in the rudder cables. The rudder cable may catch at the bearing screw of the brake lever.

LTA Nr 1/68

Description of modification:

All new aircraft beginning with S.No.13047 are modified according to corrected drawings.

All remaining aircraft are to be modified according to the drawing below:



Drawings to be corrected

Remarks

Drawing
 L-267.10-S2/S3

9. 11. 1967
 KATHE

Modification to be made
 until 1.5.68.



Handwritten signature

27. 11. 67