

**Subject:** Improvement of the performance map of the new IAE50R-AA ECU with serial numbers "AE00XXX" which were installed as standard from 2014 onwards.

**Applicability:**

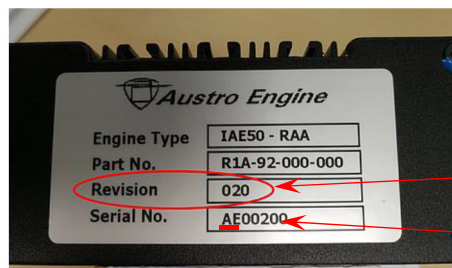
<b>ASK 21 Mi</b>	Type-Certificate EASA.A.221	all serial numbers
<b>ASH 25 Mi</b>	Type-Certificate EASA.A.213	all serial numbers
<b>ASH 30 Mi</b>	Type-Certificate EASA.A.213	all serial numbers
<b>ASG 32 Mi</b>	Type-Certificate EASA.A.599	all serial numbers

Only aircraft with ECU serial number beginning with AE and revision 020 or AA1 are affected, see also "Reason".

**Classification:** Minor Change

**Urgency:** during the next engine maintenance or next annual C of A inspection

**Reason:** For newer ECUs where the serial number begins with the letters "AE", the engine manufacturer Austro Engine has published with **MSB E1 007** a new software with different adjustments.



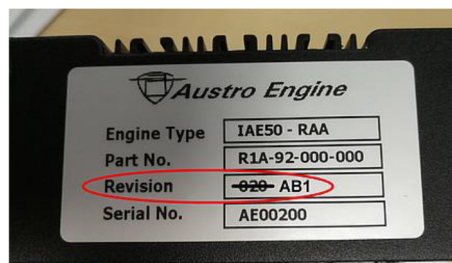
**Fig. 1: Affected ECU version**

The revision is 020 (or even AA1)

The serial number starts with AE

Further information refer to **MSB E1 007** from Austro Engine.

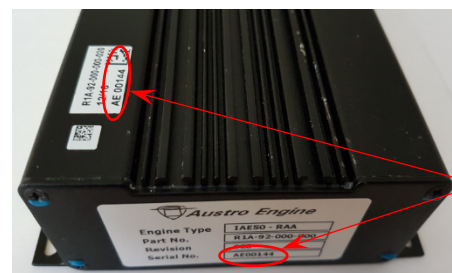
**Action:** Send the removed ECU to A. Schleicher GmbH or Austro Engine to upload the new software with the version number "SW\_V1.1.9.2.4". The company A. Schleicher GmbH has the possibility to upload the software even when the ECU is installed. Customers in the USA or Australia may contact the local representatives of A. Schleicher GmbH.



**Fig. 2: Change of the revision number after the update**


With removed or easy accessible ECU affix a new identification plate onto the original one or carry out the change with a wipe-resistant marker (permanent marker).

It takes some effort to remove and reinstall the ECU. For identification of the ECU's serial number, it is also possible to use the label that is visible when installed, see Fig. 3. If the ECU is reprogrammed in the installed state and the revision of the ECU's identification plate is not accessible, an alternative replacement plate (see Fig. 4) is attached to the accessible side of the ECU. If this ECU is removed or replaced later, this replacement plate has to be removed and the revision changed on the original identification plate as described above.



**Fig. 3: Identification of the ECU at ASH 30 Mi und ASG 32 Mi.**

When installed the serial number of the affected ECU's can be checked on the upper label too.

	Part No.	R1A-92-000-000	
	Revision	AB1	
Engine Type	AE50 - RAA	Serial No.	AE00XXX
<small>Detach this placard when original placard is accessible and change revision "020" to "AB1" according to Service Bulletin No. MSB-E1-007</small>			

**Fig. 4: Replacement label in case of inaccessibility of the original plate**

**Material and Drawings:**

See Action and Austro Engine MSB-E1-007.

**Mass and Balance:**

The mass and C. of G. position remains unchanged.

**Notes:**

If the aircraft was produced after the 1th September 2017 or had been at the company Alexander Schleicher GmbH after this time for a review or repair, the measures under "Action" have already been carried out.


The measures must only be accomplished by the manufacturer Alexander Schleicher or by a maintenance organisation according to European Union Commission Regulation (EC) 1321/2014 Part M / Section A / Subpart F.

All actions are to be inspected by certifying staff according to European Union Commission Regulation (EC) 1321/2014 Part M / Part 66 in the scope of a modification and have to be certified in the sailplane inspection documents and in the sailplane logbook.

In countries outside the scope of EC 1321/2014 the corresponding national rules shall apply.

Poppenhausen, 22.05.2018

**Alexander Schleicher**  
GmbH & Co.

i.A.   
(P. Anklam)

This Technical Note bases on a change, which was approved by EASA under the minor change approval EASA 10063416.