

Supplement LF –

New rotor cooling air intake filter

- LF.0 Record of revision, list of effective pages, table of contents
 - LF0.1 Record of revisions
 - LF0.2 List of effective pages
- LF.1 Description and technical data
 - LF1.1 Introduction
 - LF1.2 Description and specifications
- LF.2 Description of control systems, equipment and power-plant
 - LF2.1 Power-plant
 - LF2.1.1 Description of components
 - LF2.1.1.1 Cooling systems
- LF.7 Inspections and service life limitations
 - LF7.1 Periodic inspections of the power-plant
 - LF7.1.1 Inspect the engine in accordance with the engine manual.

LF.0 Record of revision, list of effective pages, table of contents

Copyright © 2023

Alexander Schleicher GmbH & Co. Poppenhausen (Wasserkuppe)

All rights reserved. Reprint or copying -also partially- only with the author's permission.

LF0.1 Record of revisions

Any revision of the present manual must be recorded in the following table "Record of Revisions".

The new or amended text in the revised page will be indicated by a black vertical line; the Rev. No. and the date will be shown at the bottom of the page.

Record of revisions

rev. No.	section & pages affected	date of issue	date of insertion	ref. / signature

LF0.2 List of effective pages

Section	Page	Date	Section	Page	Date
	LF.1	26.06.2023		LF.4	26.06.2023
	LF.2	26.06.2023		LF.5	26.06.2023
	LF.3	26.06.2023		LF.6	26.06.2023

LF.1 Description and technical data

LF1.1 Introduction

The present supplement LR “New rotor cooling air intake filter” presents additional information to the basic aircraft maintenance manual. The supplement has the same applicability as the basic manual. Therefore, all notes presented in this appendix must be fully observed by the pilot and/or the owner.

LF1.2 Description and specifications

The power-plant of the aircraft is equipped with a new rotor cooling air intake filter (AS-Part-Nr. 803.61.1012). This filter replaces the previous part from Austro Engines (Part No. R1A-06-000-805), which is no longer available. The periodic inspections, presented in the engine manual, remain unchanged valid.

When fitting, cleaning or replacing the filter, special features, described in the following sections, must be observed.

LF.2 Description of control systems, equipment and power-plant

Unless otherwise presented in the following sub-section, all information for the aircraft presented in the basic manual remains unchanged valid.

LF2.1 Power-plant

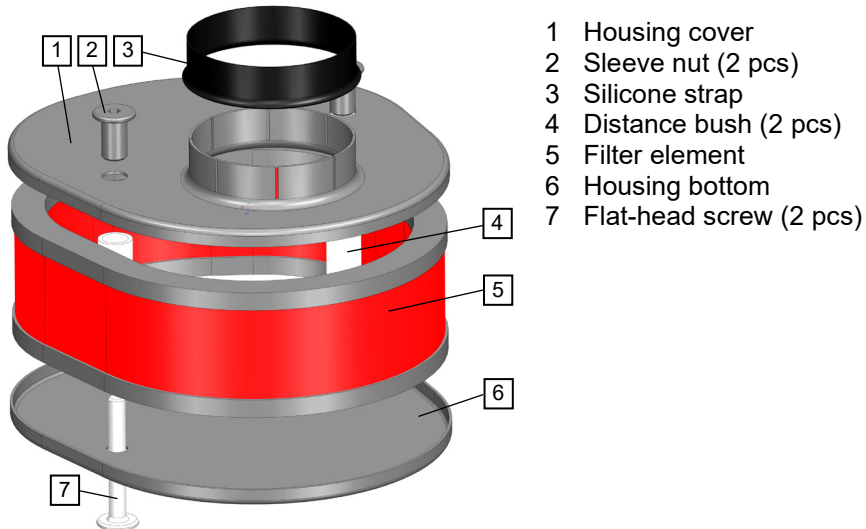
LF2.1.1 Description of components

LF2.1.1.1 Cooling systems

Rotor internal cooling air system:

The filter is mounted on the rotor cooling air system. A new filter (AS-Part-No. 803.61.1012) from own production replaces the previous filter (Austro Engine Part No. R1A-06-000-805), which is no longer available.

Fig. 2-1 Components of the filter



Fitting the filter:

On the nozzle of the fan housing (Pos. 1), a piece of a hose (Ø52 mm [2.05 in.], 16 mm [0.6 in.] wide, Pos. 2) is to be placed. The filter (Pos. 4) is fixed on the nozzle with a hose clamp (Pos. 3).

Fig. 2-2 Fitting the filter

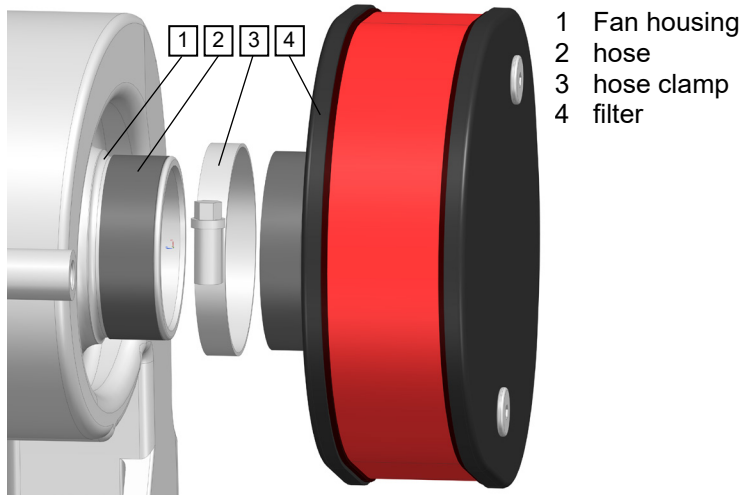
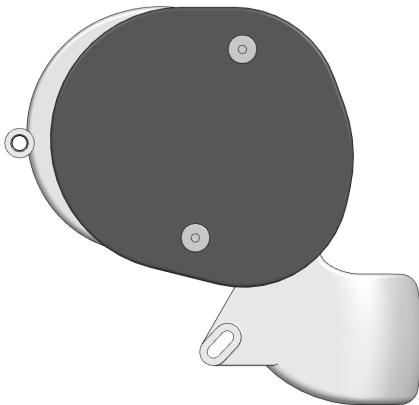


Fig. 2-3 Alignment of the filter (rear view)



LF.7 Inspections and service life limitations

In addition to the maintenance described in the basic manual, the following instructions for continuous airworthiness applies:

LF7.1 Periodic inspections of the power-plant

LF7.1.1 Inspect the engine in accordance with the engine manual.

The procedure to clean the filter, described in the engine manual, remains unchanged. Except when replacing the filter it's possible, to replace only the filter element and to reuse the parts of the housing. To dismantle the filter, two housing screws must be loosened (see also Fig. 2-1). When reassembling, both housing screws must be secured with Loctite 242.

NOTE

There is also a variant, in which the filter element is bonded with the housing (identifiable by the single screw in the centre, contrary to the variant with two housing screws, described in Fig. 2-1). This filter cannot be dismantled and must be renewed completely.